

SEAL:

**PHILADELPHIA PARKING AUTHORITY
 GARAGE D RENEWAL
 PHILADELPHIA INTERNATIONAL AIRPORT
 PHILADELPHIA, PA**

NO.	DATE	REVISIONS	BY
1	11/23	ADDENDUM #4	

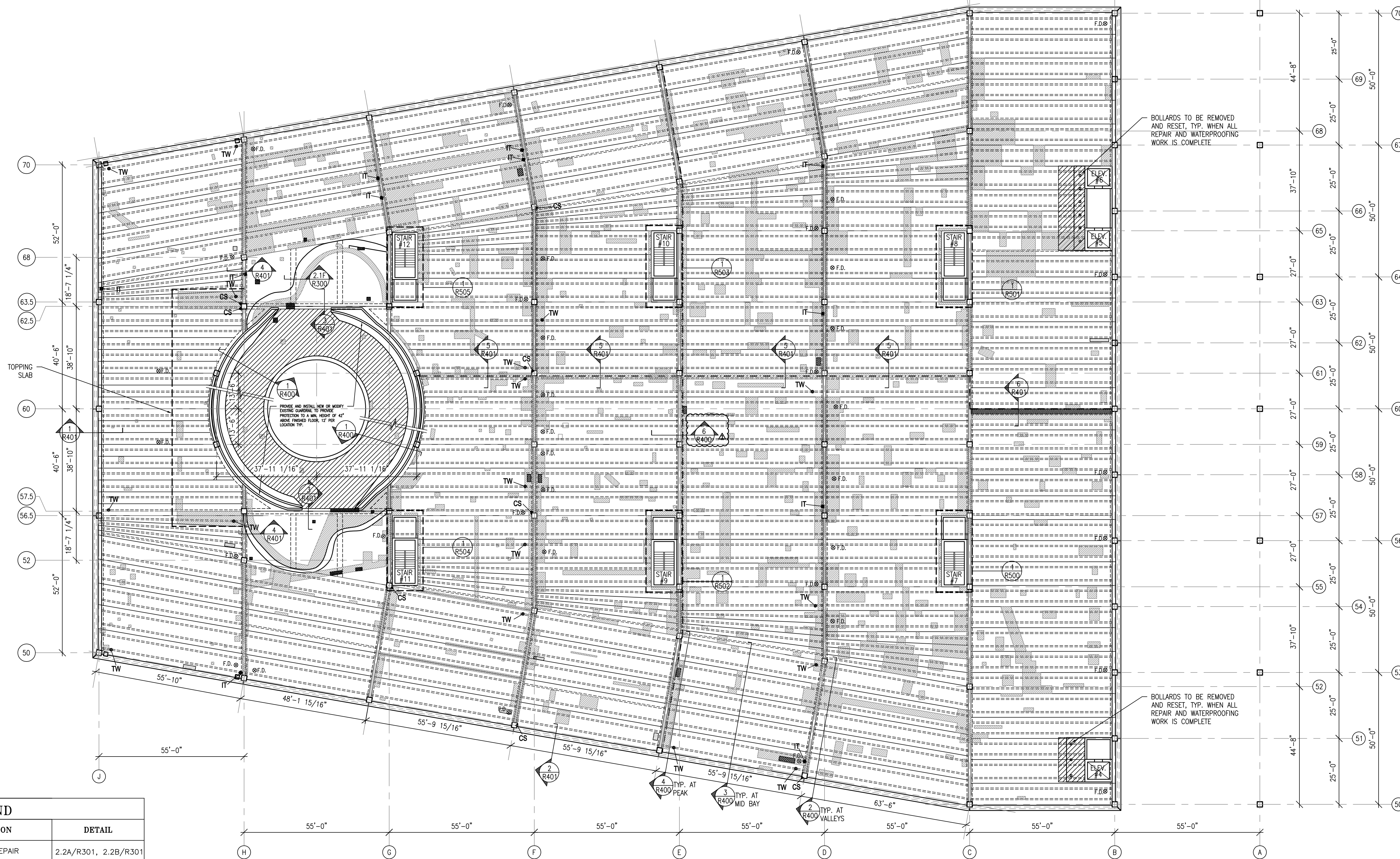
PPA PROJECT ID No.	BID 15-19
DESIGN:	JB
DRAWN:	VB
CHECKED:	AFW
SCALE:	AS SHOWN
DATE:	OCTOBER, 2015

PROJECT No.:
 DRAWING TITLE:

**LEVEL 1
 REPAIR PLAN**

DRAWING No.

R-101



LEGEND		
SYMBOL	DESCRIPTION	DETAIL
	FULL DEPTH SLAB REPAIR	2.2A/R301, 2.2B/R301
	PARTIAL DEPTH FLOOR REPAIR	2.1A/R300-2.1H/R301
	PARTIAL DEPTH OVERHEAD TEE FLANGE REPAIR	2.3A/R301
	INVERTED TEE GIRDER REPAIR	2.7/R302
	VERTICAL CONCRETE REPAIR AT COLUMN	2.9/R303
	TEE WEB REPAIR	2.8/R302
	TEE TO TEE CONNECTOR REPAIR	2.4/R302
	EXISTING FLOOR DRAIN REPLACEMENT	3.5/R305
	SUPPLEMENTARY FLOOR DRAIN	3.6/R305
	WALL REPAIR	2.15/R305
	RAMP SOFFIT REPAIR	2.3B/R301
	EXISTING MEMBRANE TO BE REMOVED	2.1H/R301

LEVEL 1 REPAIR PLAN
 SCALE: 1" = 20'-0"
 NORTH

ISSUED FOR BID - OCTOBER 9, 2015

SEAL:

**PHILADELPHIA PARKING AUTHORITY
 GARAGE D RENEWAL
 PHILADELPHIA INTERNATIONAL AIRPORT
 PHILADELPHIA, PA**

NO.	DATE	ADDENDUM #	BY
1	11/23		

PPA PROJECT ID No. BID 15-19
 DESIGN: JIB
 DRAWN: VB
 CHECKED: AFW
 SCALE: AS SHOWN
 DATE: OCTOBER, 2015

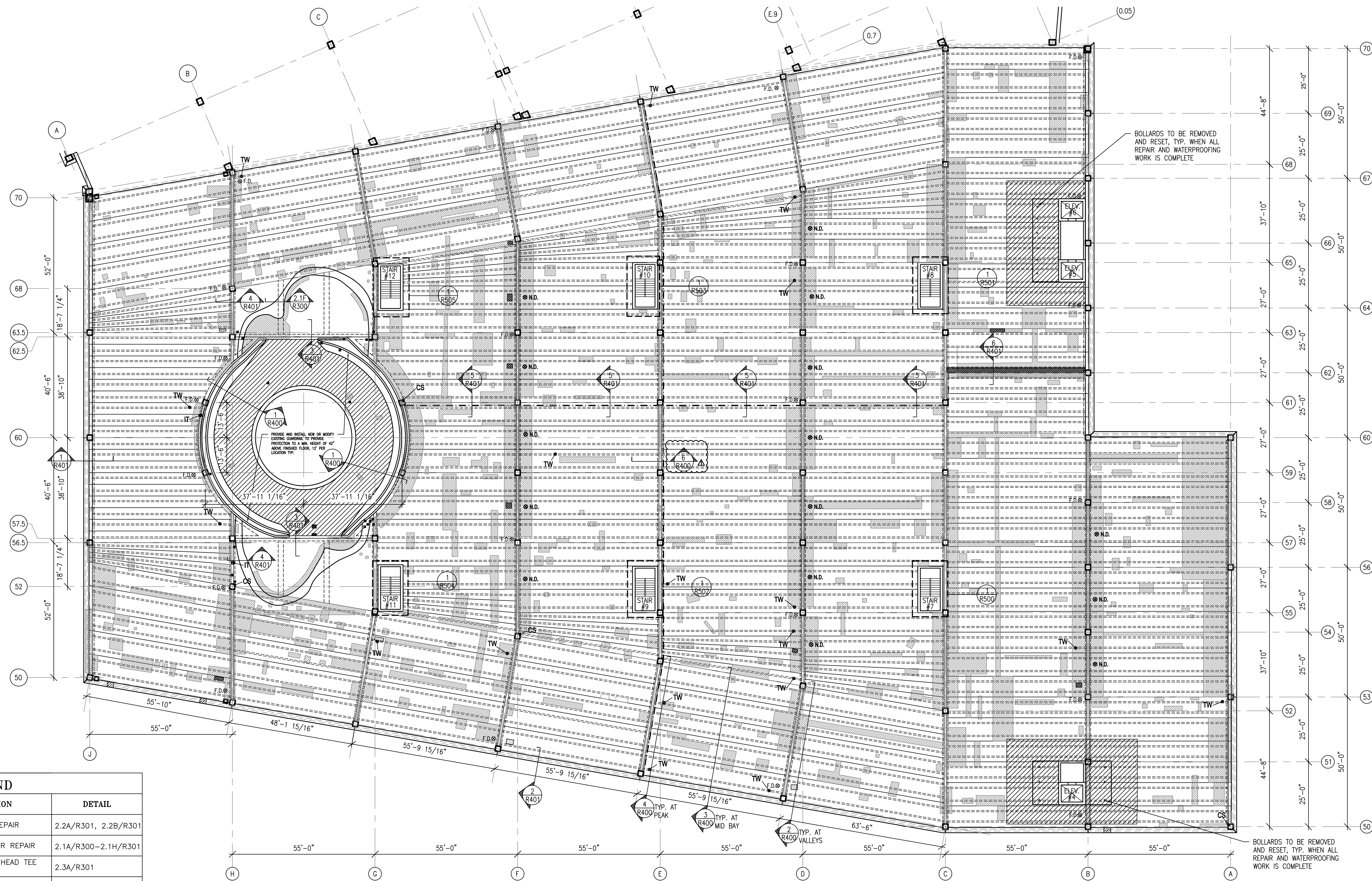
PROJECT No.:

DRAWING TITLE:

**LEVEL 2
 REPAIR PLAN**

DRAWING No.

R-102



BOLLARDS TO BE REMOVED AND RESET, TYP. WHEN ALL REPAIR AND WATERPROOFING WORK IS COMPLETE

BOLLARDS TO BE REMOVED AND RESET, TYP. WHEN ALL REPAIR AND WATERPROOFING WORK IS COMPLETE

LEGEND		
SYMBOL	DESCRIPTION	DETAIL
	FULL DEPTH SLAB REPAIR	2.2A/R301, 2.2B/R301
	PARTIAL DEPTH FLOOR REPAIR	2.1A/R300-2.1H/R301
	PARTIAL DEPTH OVERHEAD TEE FLANGE REPAIR	2.3A/R301
	INVERTED TEE GIRDER REPAIR	2.7/R302
	VERTICAL CONCRETE REPAIR AT COLUMN	2.9/R303
	TEE WEB REPAIR	2.8/R302
	TEE TO TEE CONNECTOR REPAIR	2.4/R302
	EXISTING FLOOR DRAIN REPLACEMENT	3.5/R305
	SUPPLEMENTARY FLOOR DRAIN	3.6/R305
	WALL REPAIR	2.15/R305
	RAMP SOFFIT REPAIR	2.3B/R301
	EXISTING MEMBRANE TO BE REMOVED	2.1H/R301

LEVEL 2 REPAIR PLAN
 SCALE: 1" = 20'-0"
 NORTH

ISSUED FOR BID - OCTOBER 9, 2015

SEAL:

**PHILADELPHIA PARKING AUTHORITY
GARAGE D RENEWAL
PHILADELPHIA INTERNATIONAL AIRPORT
PHILADELPHIA, PA**

NO.	DATE	ADDENDUM #	BY
1	11/23		

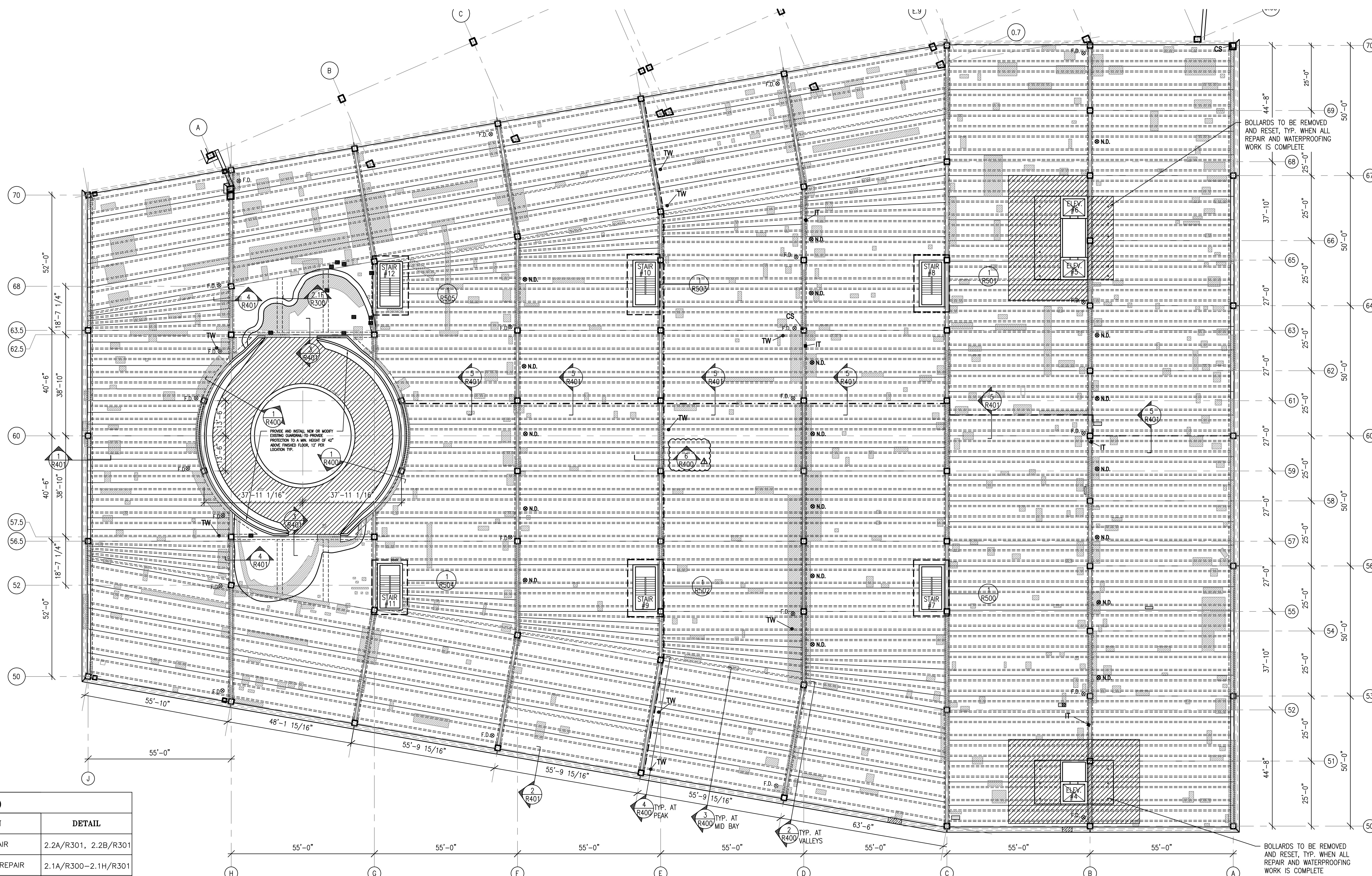
PPA PROJECT ID No. BID 15-19
DESIGN: JIB
DRAWN: VB
CHECKED: AFW
SCALE: AS SHOWN
DATE: OCTOBER, 2015

PROJECT No.:
DRAWING TITLE:

**LEVEL 3
REPAIR PLAN**

DRAWING No.

R-103



LEVEL 3 REPAIR PLAN
SCALE: 1" = 20'-0"

LEGEND		
SYMBOL	DESCRIPTION	DETAIL
[Hatched Box]	FULL DEPTH SLAB REPAIR	2.2A/R301, 2.2B/R301
[Dotted Box]	PARTIAL DEPTH FLOOR REPAIR	2.1A/R300-2.1H/R301
[Dotted Box]	PARTIAL DEPTH OVERHEAD TEE FLANGE REPAIR	2.3A/R301
[IT Symbol]	INVERTED TEE GIRDER REPAIR	2.7/R302
[CS Symbol]	VERTICAL CONCRETE REPAIR AT COLUMN	2.9/R303
[TW Symbol]	TEE WEB REPAIR	2.8/R302
[Square with X]	TEE TO TEE CONNECTOR REPAIR	2.4/R302
[F.D. Symbol]	EXISTING FLOOR DRAIN REPLACEMENT	3.5/R305
[Circle with N.D.]	SUPPLEMENTARY FLOOR DRAIN	3.6/R305
[Hatched Box]	WALL REPAIR	2.15/R305
[Hatched Box]	RAMP SOFFIT REPAIR	2.3B/R301
[Hatched Box]	EXISTING MEMBRANE TO BE REMOVED	2.1H/R301

ISSUED FOR BID - OCTOBER 9, 2015

BOLLARDS TO BE REMOVED AND RESET, TYP. WHEN ALL REPAIR AND WATERPROOFING WORK IS COMPLETE

BOLLARDS TO BE REMOVED AND RESET, TYP. WHEN ALL REPAIR AND WATERPROOFING WORK IS COMPLETE

SEAL:

**PHILADELPHIA PARKING AUTHORITY
 GARAGE D RENEWAL
 PHILADELPHIA INTERNATIONAL AIRPORT
 PHILADELPHIA, PA**

NO.	DATE	REVISIONS	BY
1	11/23	ADDENDUM #4	

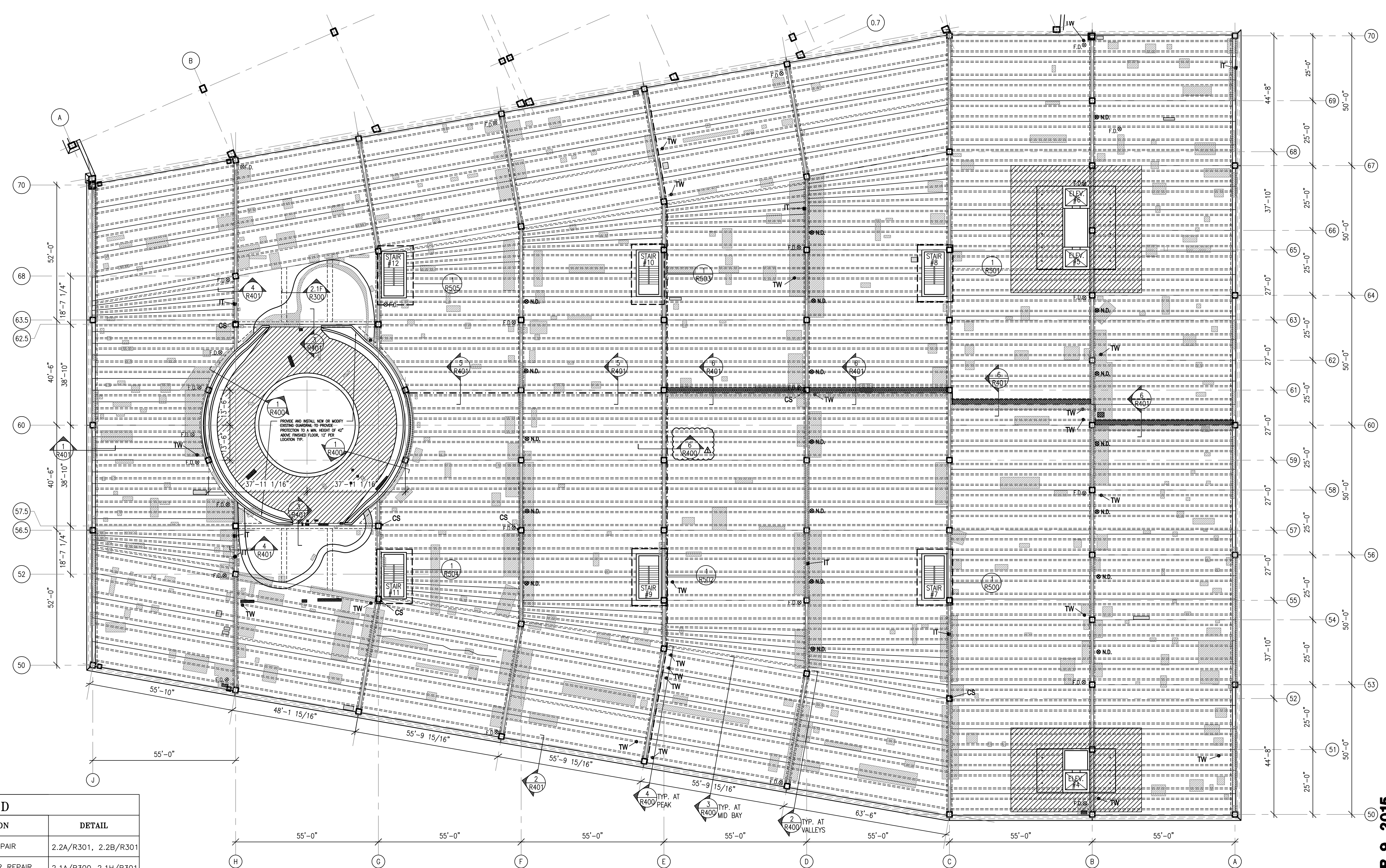
PPA PROJECT ID No. BID 15-19
 DESIGN: JIB
 DRAWN: VB
 CHECKED: AFW
 SCALE: AS SHOWN
 DATE: OCTOBER, 2015
 PROJECT No.:
 DRAWING TITLE:

**LEVEL 4
 REPAIR PLAN**

DRAWING No.

R-104

ISSUED FOR BID - OCTOBER 9, 2015



LEVEL 4 REPAIR PLAN
 SCALE: 1" = 20'-0"
 NORTH

LEGEND		
SYMBOL	DESCRIPTION	DETAIL
	FULL DEPTH SLAB REPAIR	2.2A/R301, 2.2B/R301
	PARTIAL DEPTH FLOOR REPAIR	2.1A/R300-2.1H/R301
	PARTIAL DEPTH OVERHEAD TEE FLANGE REPAIR	2.3A/R301
	INVERTED TEE GIRDER REPAIR	2.7/R302
	VERTICAL CONCRETE REPAIR AT COLUMN	2.9/R303
	TEE WEB REPAIR	2.8/R302
	TEE TO TEE CONNECTOR REPAIR	2.4/R302
	EXISTING FLOOR DRAIN REPLACEMENT	3.5/R305
	SUPPLEMENTARY FLOOR DRAIN	3.6/R305
	WALL REPAIR	2.15/R305
	RAMP SOFFIT REPAIR	2.3B/R301
	EXISTING MEMBRANE TO BE REMOVED	2.1H/R301

SEAL:

**PHILADELPHIA PARKING AUTHORITY
 GARAGE D RENEWAL
 PHILADELPHIA INTERNATIONAL AIRPORT
 PHILADELPHIA, PA**

NO.	DATE	ADDENDUM #	REVISIONS	BY
1	11/23			

PPA PROJECT ID No. BID 15-19
 DESIGN: JJB
 DRAWN: VB
 CHECKED: AFW
 SCALE: AS SHOWN
 DATE: OCTOBER, 2015

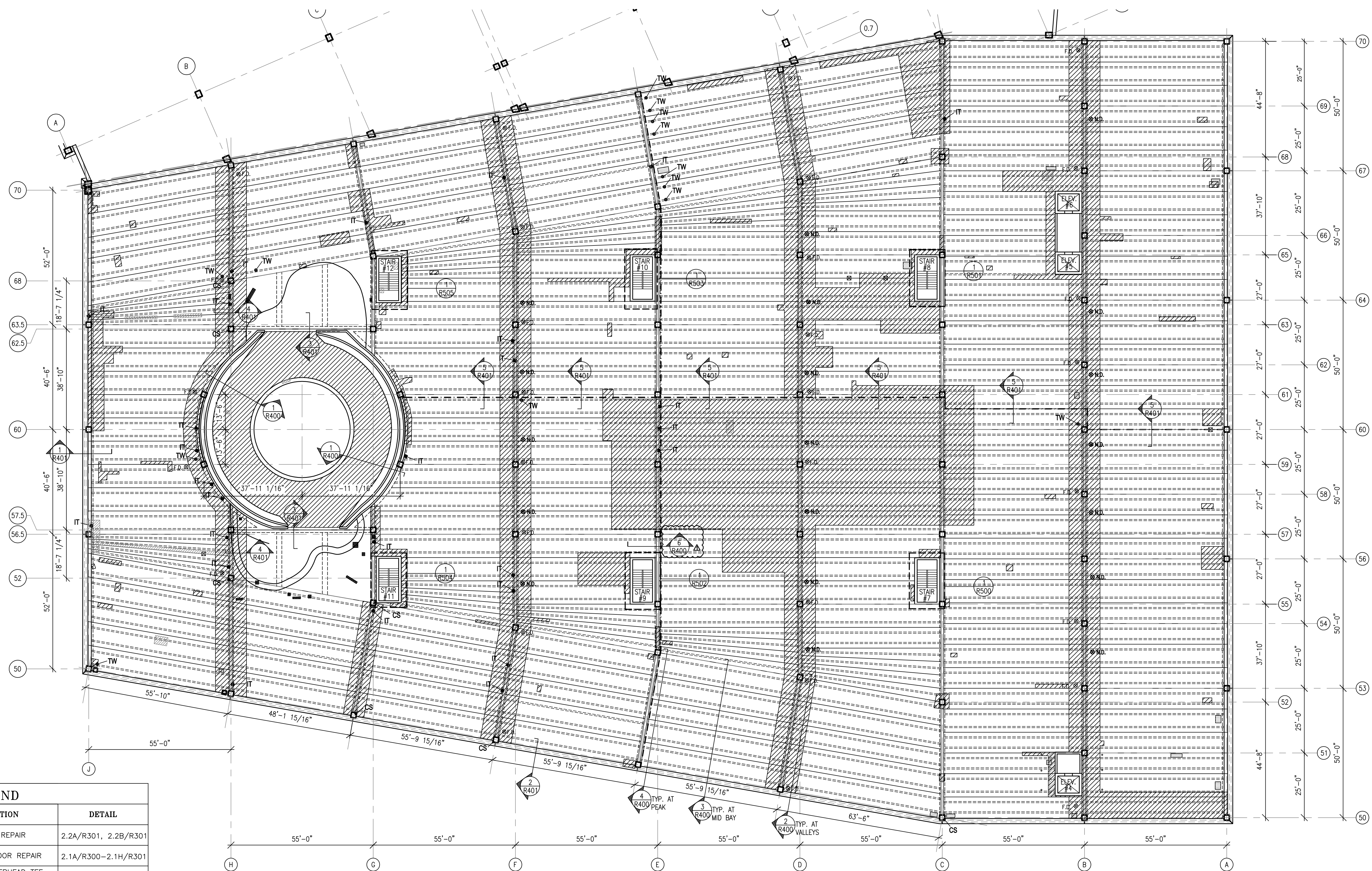
PROJECT No.:
 DRAWING TITLE:

**ROOF LEVEL
 REPAIR PLAN**

DRAWING No.

R-105

ISSUED FOR BID - OCTOBER 9, 2015



ROOF LEVEL REPAIR PLAN
 SCALE: 1" = 20'-0"
 NORTH

LEGEND		
SYMBOL	DESCRIPTION	DETAIL
	FULL DEPTH SLAB REPAIR	2.2A/R301, 2.2B/R301
	PARTIAL DEPTH FLOOR REPAIR	2.1A/R300-2.1H/R301
	PARTIAL DEPTH OVERHEAD TEE FLANGE REPAIR	2.3A/R301
	INVERTED TEE GIRDER REPAIR	2.7/R302
	VERTICAL CONCRETE REPAIR AT COLUMN	2.9/R303
	TEE WEB REPAIR	2.8/R302
	TEE TO TEE CONNECTOR REPAIR	2.4/R302
	EXISTING FLOOR DRAIN REPLACEMENT	3.5/R305
	SUPPLEMENTARY FLOOR DRAIN	3.6/R305
	WALL REPAIR	2.15/R305
	RAMP SOFFIT REPAIR	2.3B/R301
	EXISTING MEMBRANE TO BE REMOVED	2.1H/R301

SEAL:

**PHILADELPHIA PARKING AUTHORITY
 GARAGE D RENEWAL
 PHILADELPHIA INTERNATIONAL AIRPORT
 PHILADELPHIA, PA**

NO.	DATE	REVISIONS	BY
1	11/23	ADDENDUM #4	

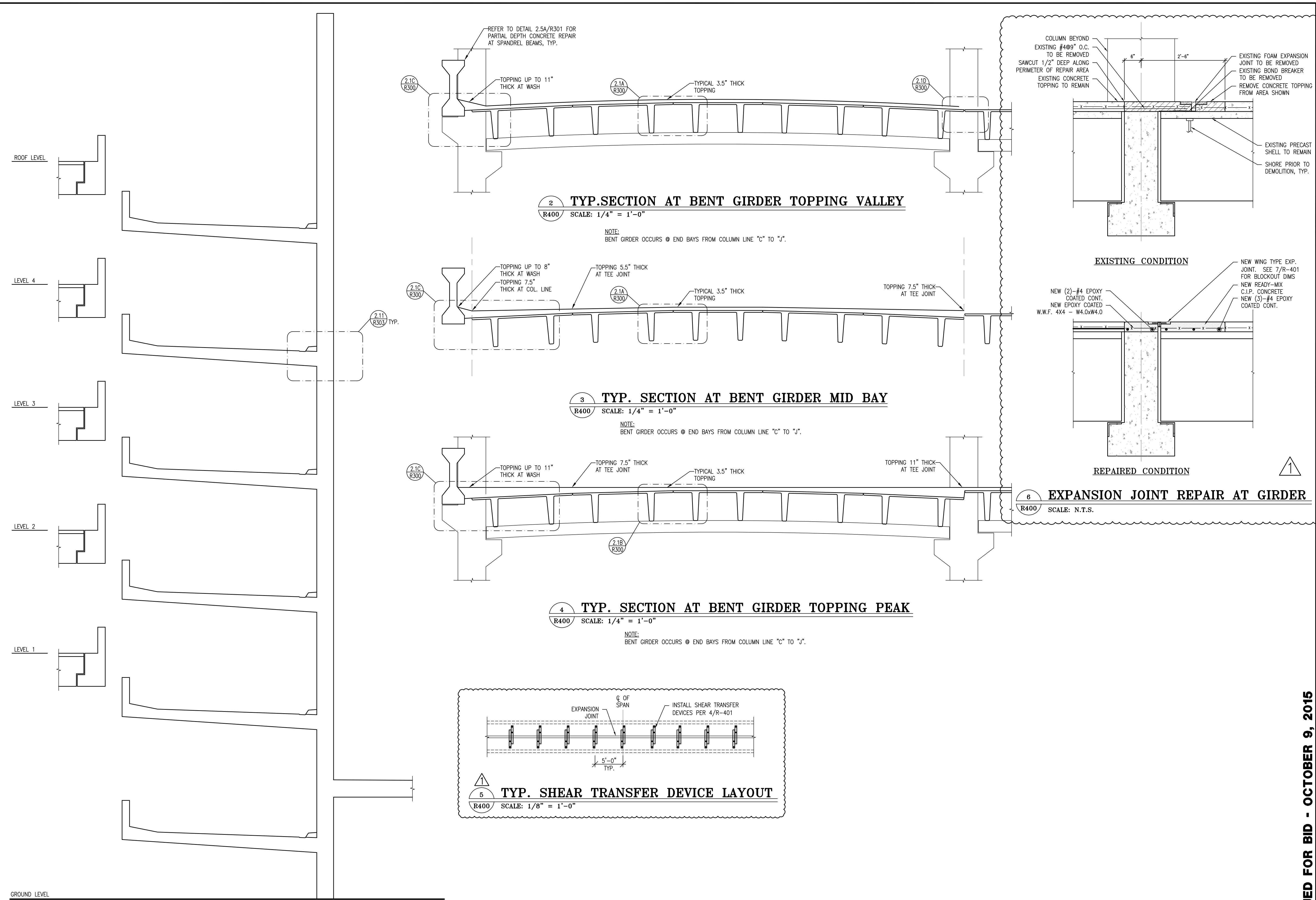
PPA PROJECT ID No.	BID 15-19
DESIGN:	JB
DRAWN:	VB
CHECKED:	AFW
SCALE:	AS SHOWN
DATE:	OCTOBER, 2015

PROJECT No.:
 DRAWING TITLE:

REPAIR SECTIONS

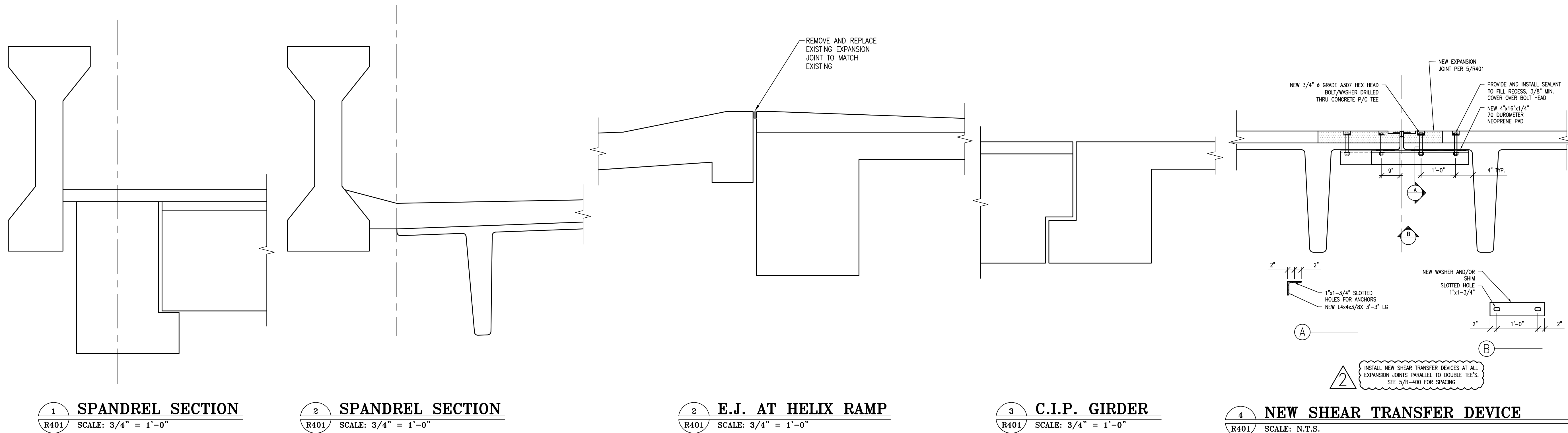
DRAWING No.

R-400



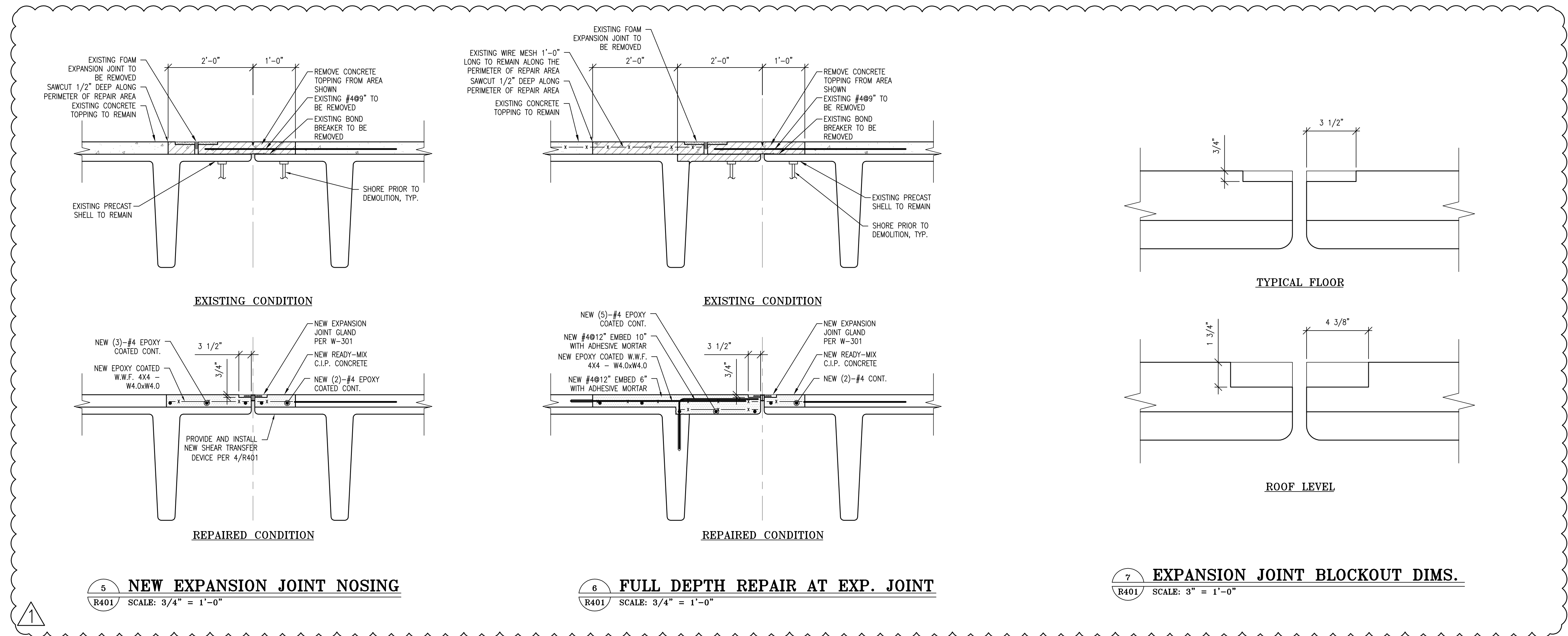
1 HELIX RAMP SECTION
 SCALE: 1/4" = 1'-0"

ISSUED FOR BID - OCTOBER 9, 2015



NOTE:
1. REFER TO DETAIL 2.5B/R302 FOR OVERHEAD PARTIAL DEPTH REPAIR OF C.I.P. BEAM

NOTE:
1. REFER TO DETAIL 2.5B/R302 FOR OVERHEAD PARTIAL DEPTH REPAIR OF C.I.P. BEAM



SEAL:

**PHILADELPHIA PARKING AUTHORITY
GARAGE D RENEWAL
PHILADELPHIA INTERNATIONAL AIRPORT
PHILADELPHIA, PA**

NO.	DATE	REVISIONS	BY
2	11/23	ADDENDUM #4	
1	11/10/15	ADDENDUM #2	

PPA PROJECT ID No. BID 15-19
DESIGN: JB
DRAWN: VB
CHECKED: AFW
SCALE: AS SHOWN
DATE: OCTOBER, 2015
PROJECT No.:
DRAWING TITLE:

REPAIR SECTIONS

DRAWING No.

R-401

ISSUED FOR BID - OCTOBER 9, 2015