

PURSUANT TO THE REQUIREMENTS OF PENNSYLVANIA ACT 157 (1996), THE CONTRACTOR SHALL CONTACT THE PENNSYLVANIA ONE CALL SYSTEM AT 1-800-242-1776, AT LEAST 3 DAYS PRIOR TO EXCAVATION.

PROTECT YOURSELF



WHAT YOU DON'T KNOW CAN HURT YOU.

CALL BEFORE YOU DIG!
PENNSYLVANIA LAW REQUIRES 3 WORKING DAYS NOTICE FOR CONSTRUCTION PHASE & 10 WORKING DAYS IN DESIGN STAGE

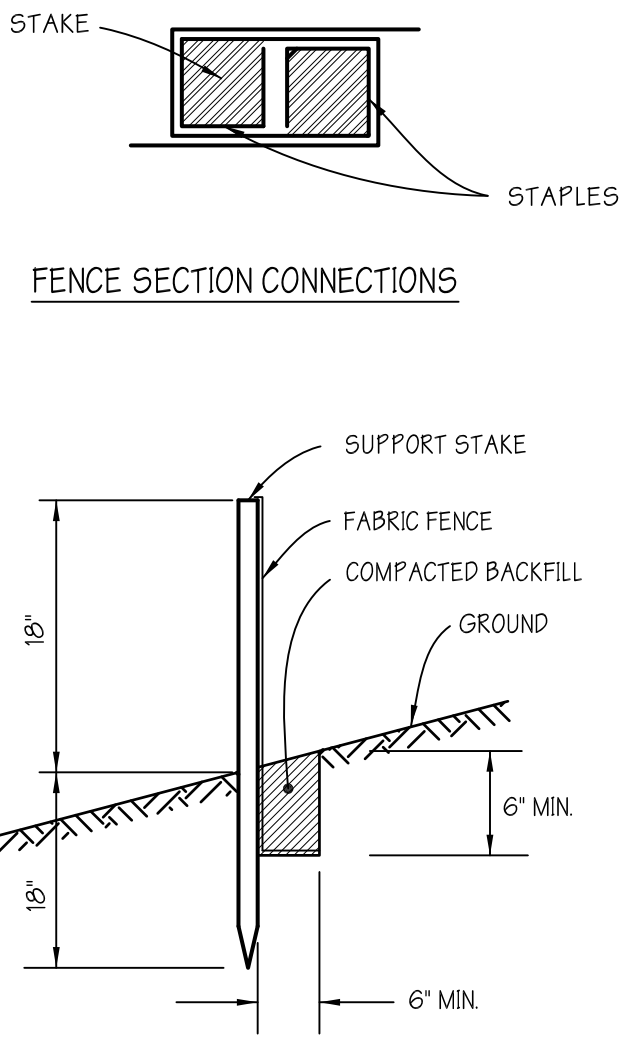
PENNSYLVANIA ONE CALL SYSTEM, INC.
1-800-242-1776 OR 811

CONSTRUCTION SEQUENCE

- 1) INSTALLATION OF ALL SOIL EROSION CONTROL MEASURES
- 2) CHANGE GRADES AND CONTOURS
- 3) STABILIZE NEWLY GRADED AREA
- 4) REMOVAL OF ALL SOIL EROSION CONTROL MEASURES

NOTES:

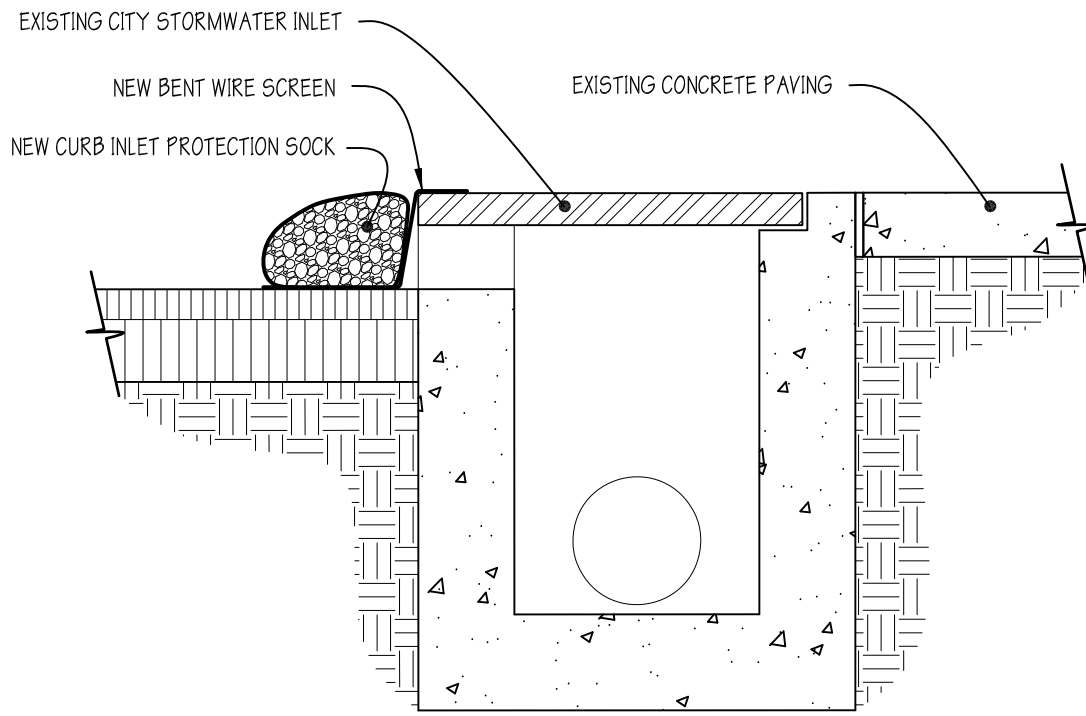
1. DURING THE GRADING PROCESS THE CONTRACTOR SHALL REMOVE ALL EXCESS SOIL AND GRAVEL AND TRANSPORT AND DISPOSE OFF SITE IN ACCORDANCE WITH PA DEP REGULATIONS.
2. ALL EXCAVATION WITHIN 10'-0" OF THE FACE OF BRIDGE PIERS SHALL BE SAWCUT AND HAND DUG ONLY.



NOTES

1. STAKES SHALL BE SPACED AT 8'-0" O.C. MAXIMUM, USE 2" X 2" WOOD OR EQUIVALENT STEEL STAKES.
2. FILTER FABRIC FENCE MUST BE PLACED AT LEVEL EXISTING GRADE. BOTH ENDS OF THE BARRIER MUST BE EXTENDED AT LEAST 8'-0" UP SLOPE AT 45 DEGREES TO THE MAIN BARRIER ALIGNMENT.
3. SEDIMENT MUST BE REMOVED WHEN ACCUMULATIONS REACH 1/2 THE ABOVE GROUND HEIGHT OF THE FENCE.
4. ANY SECTION OF FILTER FABRIC FENCE WHICH HAS BEEN UNDERMINED OR TOPPED MUST BE IMMEDIATELY REPLACED OR REPAIRED.
5. INSPECTION OF THE FILTER FABRIC FENCE'S EFFECTIVE AND EFFICIENT OPERATION SHALL BE PERFORMED ON A WEEKLY BASIS OR AFTER EACH MEASURABLE RAIN FALL EVENT.

2 SILT FENCE DETAILS
CD1.0 SCALE: NTS



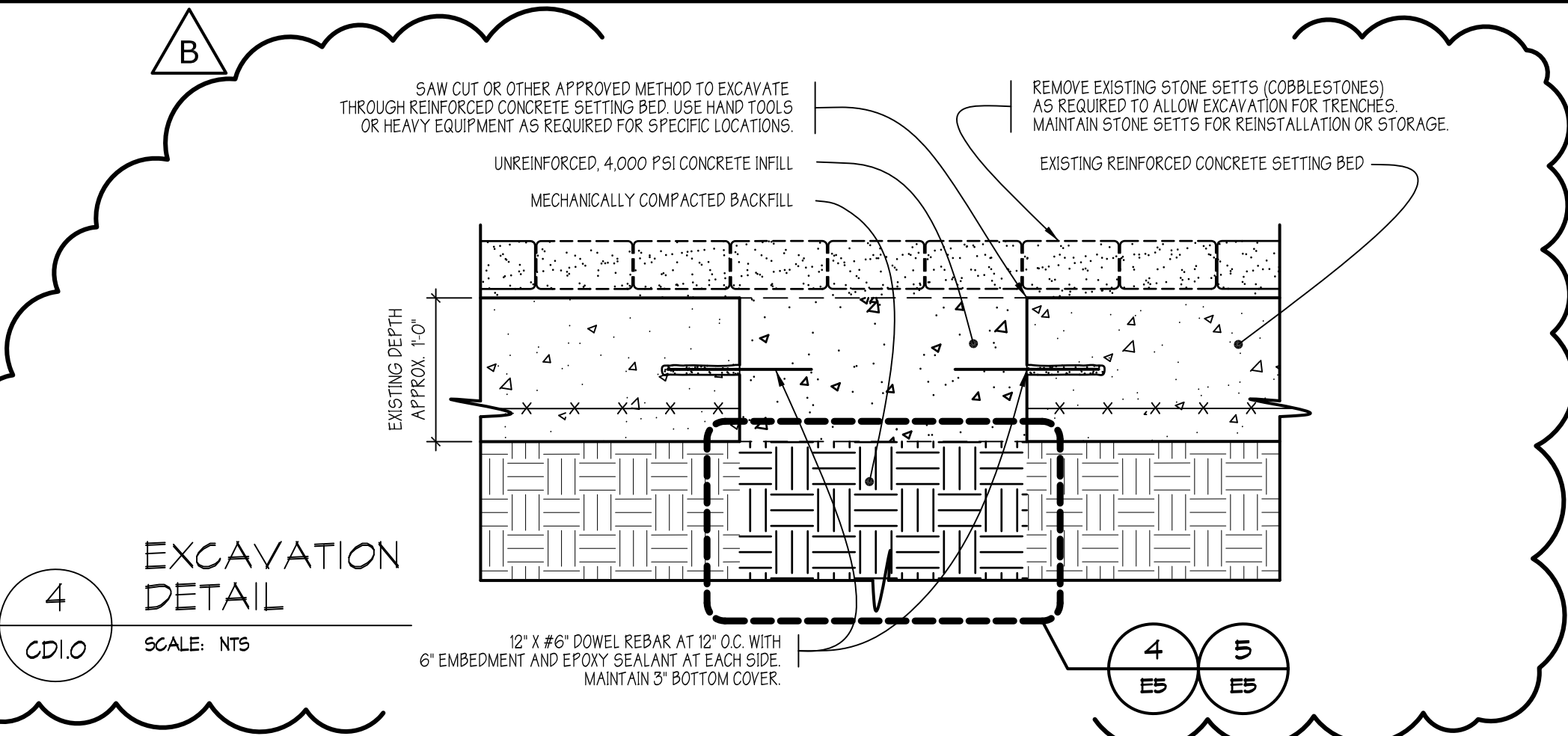
NOTES

1. INSTALL INLET PROTECTION IN A PATTERN THAT ALLOWS COMPLETE PROTECTION OF THE INLET AREA AND TO ENSURE A MINIMAL OVERLAP OF AT LEAST ONE (1) FOOT ON EITHER SIDE OF THE OPENING BEING PROTECTED.
2. ANCHOR THE INLET PROTECTION USING STAPLES, STAKES OR OTHER DEVICES CAPABLE OF HOLDING THE INLET PROTECTION IN PLACE.
3. STANDARD INLET PROTECTION FOR CURB INLET PROTECTION WILL USE EIGHT (8) 1/2 INCH DIAMETER INLET PROTECTION, AND DRAIN INLETS ON SOIL WILL USE 12 INCH OR 18 INCH DIAMETER INLET PROTECTION.
4. INLET PROTECTION SHALL BE COMPACTED TO BE SLIGHTLY SHORTER THAN CURB HEIGHT.
5. INLET PROTECTION SHALL BE MAINTAINED TO ASSURE PROPER DRAINAGE AND WATER FLOW INTO THE STORM DRAIN, AND DRAIN INLETS ON SOIL WILL USE 12 INCH OR 18 INCH DIAMETER INLET PROTECTION.
6. INLET PROTECTION SHALL BE POSITIONED 50 AS TO PROVIDE A PERMEABLE PHYSICAL BARRIER TO THE DRAIN ITSELF, ALLOWING SEDIMENT TO COLLECT ON THE OUTSIDE OF THE INLET PROTECTION.
7. PROVIDE AND INSTALL A SPACER IN ORDER TO KEEP THE INLET PROTECTION AWAY FROM THE DRAIN OPENING. THE SPACER SHOULD BE A WIRE SCREEN BENT TO OVERLAP AND KEEP THE SOCK FROM FALLING INTO THE OPENING. USE AT LEAST ONE SPACER FOR EVERY FOUR (4) FEET OF CURB OPENING.

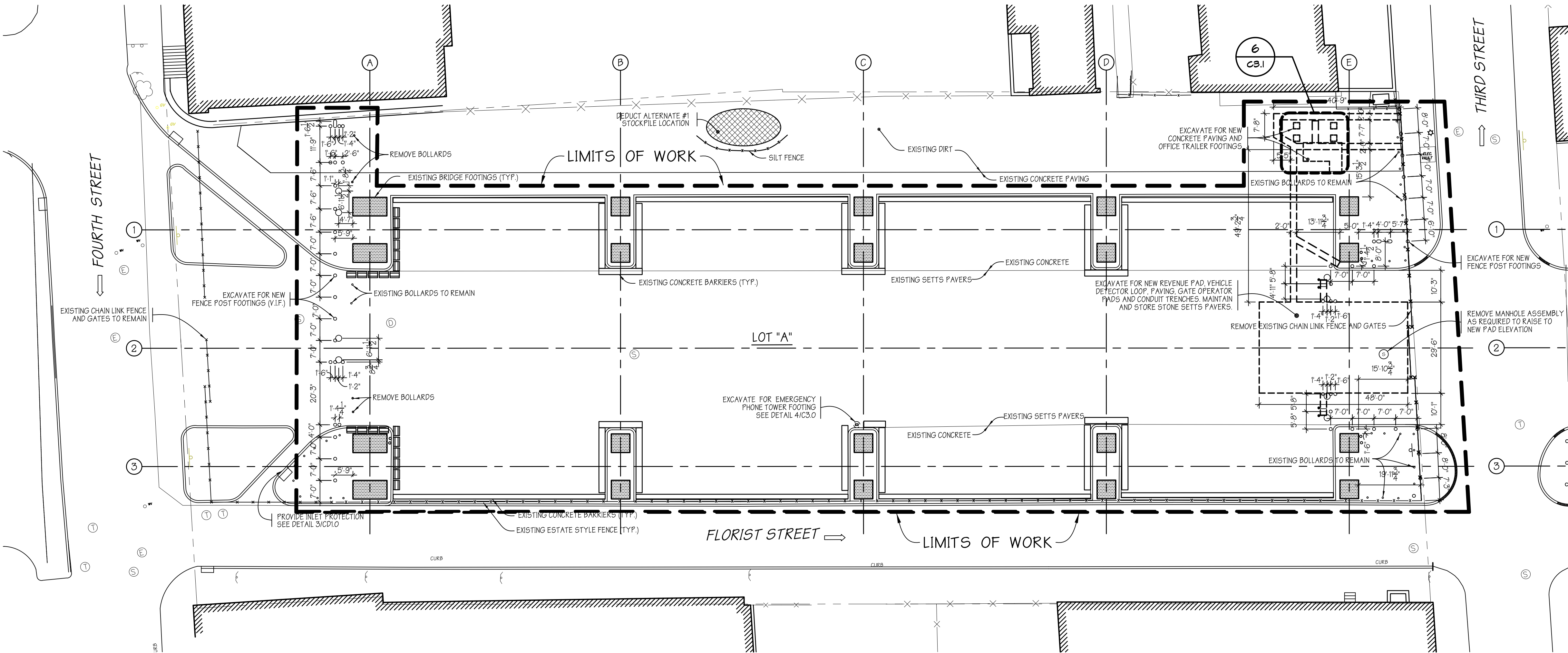
3 CURB INLET PROTECTION DETAIL
CD1.0 SCALE: NTS

SOIL EROSION AND SEDIMENT CONTROL NOTES

1. ALL SOIL EROSION AND SEDIMENT CONTROL BMPs TO BE INSTALLED PRIOR TO ANY MAJOR SOIL DISTURBANCES, PERFORMED IN THEIR PROPER SEQUENCE, AND MAINTAINED UNTIL PERMANENT PROTECTION IS ESTABLISHED.
2. AFTER FINAL SITE STABILIZATION HAS BEEN ACHIEVED, TEMPORARY EROSION AND SEDIMENT BMPs MUST BE REMOVED. AREAS DISTURBED DURING REMOVAL OF THE BMPs MUST BE STABILIZED IMMEDIATELY.
3. UNTIL THE SITE IS STABILIZED, ALL EROSION AND SEDIMENT BMPs MUST BE PROPERLY MAINTAINED. MAINTENANCE MUST INCLUDE INSPECTIONS OF ALL EROSION AND SEDIMENT BMPs AFTER EACH RUNOFF EVENT AND ON A WEEKLY BASIS. ALL PREVENTATIVE AND REMEDIAL MAINTENANCE WORK, INCLUDING CLEAN OUT, REPAIR, REPLACEMENT, REGRADING, RESEEDING, REMULCHING, AND RENEWING MUST BE PERFORMED IMMEDIATELY. IF EROSION AND SEDIMENT CONTROL BMPs FAIL TO PERFORM AS EXPECTED, REPLACEMENT BMPs OR MODIFICATIONS OF THOSE INSTALLED WILL BE REQUIRED.
4. ANY DISTURBED AREAS THAT WILL BE LEFT EXPOSED MORE THAN 30 DAYS AND NOT SUBJECT TO CONSTRUCTION TRAFFIC WILL IMMEDIATELY RECEIVE A TEMPORARY SEEDING. IF THE SEASON PREVENTS THE ESTABLISHMENT OF A TEMPORARY COVER, THE DISTURBED AREAS WILL BE MULCHED WITH STRAW, OR EQUIVALENT MATERIAL AT A RATE OF TWO (2) TONS PER ACRE, ACCORDING TO STATE STANDARDS.
5. ALL WORK TO BE DONE IN ACCORDANCE WITH THE STATE STANDARDS FOR SOIL EROSION AND SEDIMENT CONTROL IN PENNSYLVANIA.
6. A SUB-BASE COURSE WILL BE APPLIED IMMEDIATELY FOLLOWING ROUGH GRADING AND INSTALLATION OF IMPROVEMENTS IN ORDER TO STABILIZE STREETS, ROADS, DRIVEWAYS, AND PARKING AREAS. IN AREAS WHERE NO UTILITIES ARE PRESENT, THE SUB-BASE WILL BE INSTALLED WITHIN 15 DAYS OF PRELIMINARY GRADING.
7. IMMEDIATELY FOLLOWING INITIAL DISTURBANCE OR ROUGH GRADING, ALL CRITICAL AREAS SUBJECT TO EROSION (I.E. STEEP SLOPES, ROADWAY EMBANKMENTS) WILL RECEIVE A TEMPORARY SEEDING IN COMBINATION WITH STRAW MULCH OR A SUITABLE EQUIVALENT, AT A RATE OF THREE (3) TONS PER ACRE, ACCORDING TO STATE STANDARDS.
8. WHEN REQUIRED, TRAFFIC CONTROL STANDARDS REQUIRE THE INSTALLATION OF A 50' X 30' X 1' PAD OF 1 1/2" TO 2" STONE, AT ALL CONSTRUCTION DRIVEWAYS, IMMEDIATELY AFTER INITIAL SITE DISTURBANCE AS REQUIRED.
9. THE PA DEP SHALL BE NOTIFIED OF ANY CHANGES IN OWNERSHIP.
10. DUST CONTROL MEASURES SHALL BE MAINTAINED BY THE CONTRACTOR BY MEANS OF A WATER TANK TRUCK WHICH WILL DISPERSE WATER DURING EACH WORK DAY THROUGHOUT THE SPAN OF CONSTRUCTION AND UNTIL ALL WORK HAS BEEN COMPLETED.



4 EXCAVATION DETAIL
CD1.0 SCALE: NTS

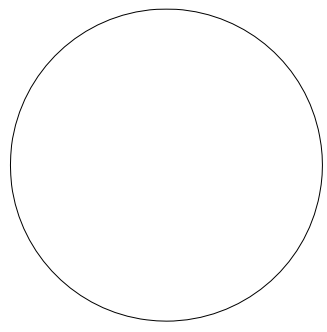


1 SITE DEMOLITION PLAN - LOT "A"
CD1.0 SCALE: 1"=20'-0"



Carlos Raul Rodriguez Architect

1961 Browning Road
Pennsauken, NJ 08110-2941
(856) 663-0606 (856) 663-3216 FAX
Carlos Raul Rodriguez, AIA, CID
NJ #11798 PA #RA-011487-X PHILA BUS LIC #94009



Signature Date

ALL INFORMATION PROVIDED ON THIS DOCUMENT IS THE PROPERTY OF THE FIRM OF CARLOS RAUL RODRIGUEZ ARCHITECT AND IS NOT TO BE COPIED, REPRODUCED OR OTHERWISE DISTRIBUTED AND UTILIZED WITHOUT WRITTEN PERMISSION. ONLY DOCUMENTS THAT ARE SIGNED AND SEALED BY CARLOS RAUL RODRIGUEZ ARCHITECT MAY BE RELIED UPON AS BEING AN AUTHENTIC, AUTHORIZED DOCUMENT ISSUED BY CARLOS RAUL RODRIGUEZ ARCHITECT. CARLOS RAUL RODRIGUEZ ARCHITECT SHALL NOT BE HELD RESPONSIBLE FOR ANY ALTERATIONS AND/OR MODIFICATIONS MADE BY OTHERS TO THESE DOCUMENTS.

© Copyright 2017 Carlos Raul Rodriguez Architect

REVISIONS			
B	CRR	16AUG17	REVISED PER ADDENDUM #3
A	CRR	14JUL17	ISSUED FOR PUBLIC BID



PROJECT NORTH

BID NO. 17-14
PROPOSED PARKING LOTS AT
THE BENJAMIN FRANKLIN BRIDGE
AND THIRD STREET
PHILADELPHIA, PA

SITE DEMOLITION PLAN
DETAILS

DATE: 14 JULY 2017 DRAWN BY:
PROJECT NO.: 1601-10 SHEET 2 OF 21

CD1.0